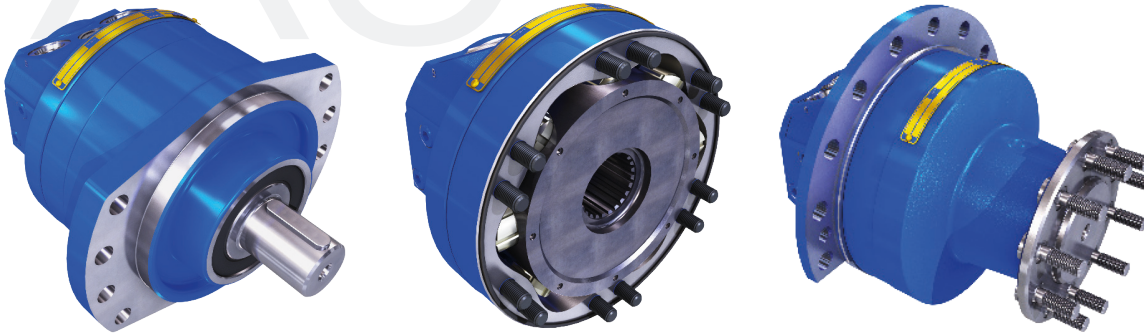


## XJ range

Compact, modular design, radial piston, multi-lobed, CAM motor

- Two speed options
- Dynamic and parking brake options
- Freewheel capability
- Radial piston, multi-stroke CAM design
- Displacement 376cc—8092 cc/rev
- Continuous pressure of 350bar



### XJ motor data

	FrameSize	<b>XJ05</b>							
Frame Diameter 225mm	Approx Weight. 44kg	<b>Nominal Displacement (cc/rev)</b>	<b>380</b>	<b>430</b>	<b>470</b>	<b>520</b>	<b>570</b>		
		Geometric Displacement (cc/rev)	376	425	472	519	565		
		Specific Torque (Nm/bar)	6.0	6.8	7.5	8.3	9.0		
		Max Pressure (bar)*	450	450	450	450	450		
		Max Cont. Speed - 1 Displacement (rpm)	250	235	240	220	200		
		Max Cont. Speed - 2 Displacement (rpm)	250	235	240	220	200		
		Max Cont. Power (kW)	29	29	29	29	29		
	FrameSize	<b>XJ08</b>							
Frame Diameter 263mm	Approx Weight. 60kg	<b>Nominal Displacement (cc/rev)</b>	<b>460</b>	<b>600</b>	<b>730</b>	<b>870</b>	<b>1000</b>	<b>1150</b>	
		coming soon							
	FrameSize	<b>XJ12</b>							
Frame Diameter 295mm	Approx Weight. 94kg	<b>Nominal Displacement (cc/rev)</b>	<b>730</b>	<b>890</b>	<b>1050</b>	<b>1200</b>	<b>1350</b>	<b>1540</b>	
		coming soon							
	FrameSize	<b>XJ20</b>							
Frame Diameter 338mm	Approx Weight. 177kg	<b>Nominal Displacement (cc/rev)</b>	<b>1670</b>	<b>1880</b>	<b>2100</b>	<b>2300</b>	<b>2500</b>		
		Geometric Displacement (cc/rev)	1666	1884	2092	2301	2505		
		Specific Torque (Nm/bar)	26.5	30.0	33.3	36.6	39.9		
		Max Pressure (bar)*	450	450	450	450	450		
		Max Cont. Speed - 1 Displacement (rpm)	125	115	100	90	85		
		Max Cont. Speed - 2 Displacement (rpm)	150	135	125	110	100		
		Max Cont. Power (kW)	70	70	70	70	70		
	FrameSize	<b>XJ40</b>							
Frame Diameter 338mm	Approx Weight. 182kg	<b>Nominal Displacement (cc/rev)</b>	<b>3330</b>	<b>3770</b>	<b>4180</b>	<b>4600</b>	<b>5010</b>		
		Geometric Displacement (cc/rev)	3332	3768	4184	4602	5010		
		Specific Torque (Nm/bar)	53.0	60.0	66.6	73.2	79.7		
		Max Pressure (bar)*	450	450	450	450	450		
		Max Cont. Speed - 1 Displacement (rpm)	150	145	140	120	110		
		Max Cont. Speed - 2 Displacement (rpm)	150	145	140	130	120		
		Max Cont. Power (kW)	110	110	110	110	110		

